

[Handwritten Signature]

11th Floor, Petroleum Plaza South Tower
9915 108 Street
Edmonton, Alberta, Canada T5K 2G8
Telephone (780) 427 3542 Fax (780) 422 6068

Meagan Nieman
A COMMISSIONER FOR OATHS
IN AND FOR THE
PROVINCE OF ALBERTA
Barrister & Solicitor

ALBERTA SUSTAINABLE RESOURCE DEVELOPMENT

Forest and Prairie Protection Act
RSA 2000, c.F-19

MINISTERIAL ORDER 36/2010

AREA CLOSURE ORDER

As a scheduled prescribed burn to be conducted by Alberta Sustainable Resource Development constitutes a burning hazard and warrants a closure, I, Bruce Mayer, Assistant Deputy Minister of the Forestry Division, Alberta Sustainable Resource Development, pursuant to s. 14 of the *Forest and Prairie Protection Act* (the "Act"), HEREBY ORDER closed to public entry those lands that are depicted in the map attached to this Order as Schedule "A" and which may be otherwise described as follows:

An area of land following:

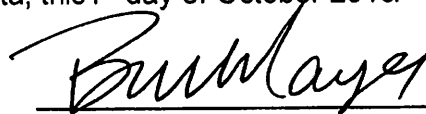
- 1) a line lying south of a small unnamed tributary on the east side of the West Castle River, north of the bridge on Service Road 774 by Castle Mountain Resort commencing in NE Sec24 Tp004 Rg04 W5 at the following GPS coordinates: 114.410146W 49.317697N, more or less, thence
- 2) southeasterly along the West Castle River to its intersection with a small unnamed tributary on the east side of the West Castle River, south of the second bridge on Service Road 774 crossing the West Castle River in SW Sec18 Tp004 Rg03 W5 at the following GPS coordinates 114.410146W 49.317697N, more or less, thence
- 3) northeasterly along said tributary to its intersection with the height of land along Barnaby Ridge in NE Sec17 Tp004 Rg03 W5 at the following GPS coordinates 114.367196W 49.303346N, more or less, thence
- 4) northwesterly along a line following the height of land along Barnaby Ridge to its intersection in SW Sec29 Tp004 Rg03 W5 with the unnamed tributary referred in paragraph 1 above at the following GPS coordinates: 114.380356W 49.321271N, more or less.

For clarity, in the event of conflict or inconsistency between the description above and the attached map, the area depicted in the map shall prevail.

This closure does not apply to Road 774.

THIS ORDER comes into effect at 12:01 o'clock a.m. on the 2nd day of October, 2010 and shall remain in effect until 12:01 o'clock a.m. on the 4th day of October, 2010.

DATED at the City of Edmonton, in the Province of Alberta, this 1st day of October 2010.



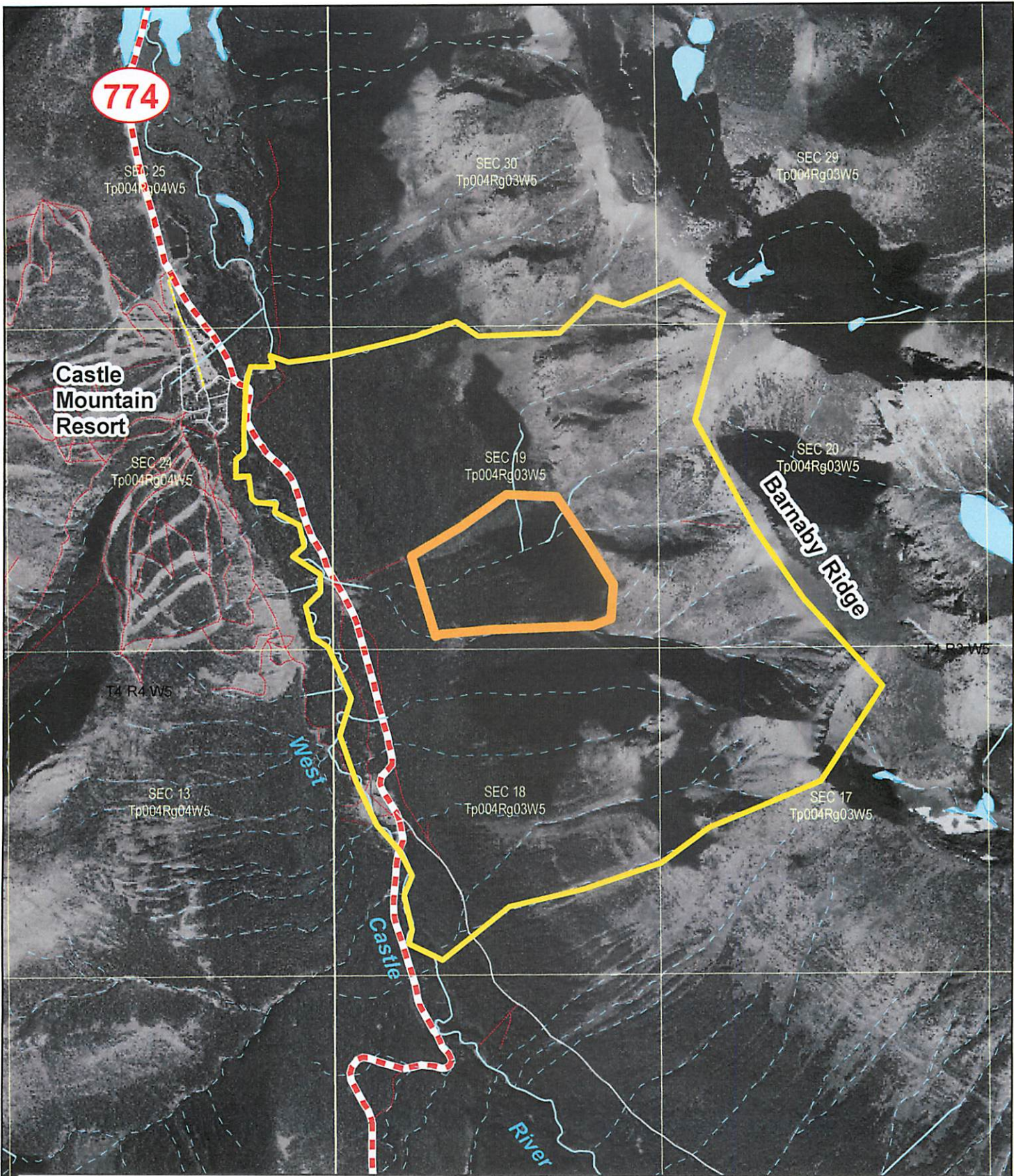
Bruce Mayer
Assistant Deputy Minister
Forestry Division
Sustainable Resource Development

ALBERTA SUSTAINABLE RESOURCE DEVELOPMENT



MINISTERIAL ORDER
36/2010

AREA CLOSURE ORDER

Schedule "A"



**West Castle
Prescribed Burn Closure Area**

-  Closure Area
-  Prescribed Burn Area

