



HOMEOWNER'S ASSESSMENT

FireSmart Begins at Home

Alberta Government



Assess Your Risk from Wildfire

Answer the questions below to see what changes will make the greatest difference in reducing your home's risk from wildfire.

HOME / 10 metres		ZONE 1	
What type of roofing material do you have?	Metal, clay tile, asphalt shingle or ULC-rated shakes (may be affected by the condition of your roof)	0	
	Unrated wood shakes	30	
How clean is your roof?	No needles, leaves or other combustible materials	0	
	A scattering of needles and leaves	2	
	Clogged gutters and extensive leaves	3	
What is the exterior of your home built of?	Non-combustible material stucco, metal siding or brick	0	
	Logs or heavy timbers	1	
	Wood, vinyl siding or wood shakes	6	
How fire resistant are your windows and doors?	Tempered glass in all doors/windows	0	
	Double-pane glass - Small/medium (<1 metre x 1 metre)	1	
	Double-pane glass - Large (>1 metre x 1 metre)	2	
	Single-pane glass - Small/medium (<1 metre x 1 metre)	2	
	Single-pane glass - Large (>1 metre x 1 metre)	4	
Are your eaves closed up and vents screened?	Closed eaves, vents screened with 3 millimetre wire mesh	0	
	Closed eaves, vents without mesh	1	
	Open eaves, vents not screened	6	

HOME / 10 metres

ZONE 1

Have you sheathed-in the underside of your balcony, deck, porch or open foundation?	Sheathed with fire-resistant materials	0	
	Sheathed with combustible materials	2	
	Not sheathed	6	
Is your home set back from the edge of a slope?	Building is located on the bottom or lower portion of a hill	0	
	Building is located on the mid to upper portion or crest of a hill	6	

HOME SCORE

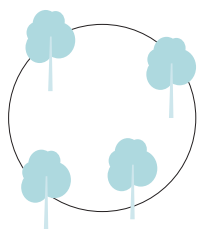
YARD / Within 10 metres of home

ZONE 1

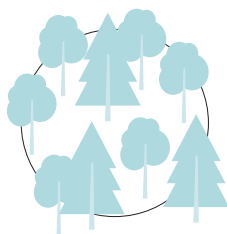
Where is your woodpile located?	More than 10 metres away from any building	0	
	Less than 10 metres away from any building	6	
What type of forest grows within 10 metres of your home?	TREES		
	Deciduous (i.e. poplar, birch)	0	
	Mixed wood (both conifer and deciduous)	30	
	Conifer (i.e. spruce, pine, fir, cedar)	30	
What kind of surface vegetation and combustible materials are within 10 metres of your home and outbuildings?	Well-drained lawn or non-combustible landscaping material	0	
	Uncut grass or shrubs	30	
	Twigs, branches and tree needles on the ground	30	

YARD (within 10 metres of home) SCORE

What kind of surface vegetation grows within 10 - 30 metres of your home?	TREES		
	Deciduous (i.e. poplar, birch, cottonwood)	0	
	Mixedwood (both conifer and deciduous)	10	
	CONIFER (i.e. spruce, pine, fir, cedar) <i>See illustration below*</i>		
	Separated	10	
	Continuous	30	
	TWIGS, BRANCHES AND NEEDLES ON THE GROUND		
	Scattered	5	
	Abundant	30	
	Uncut grass or shrubs	5	
Are there shrubs and low branches (within 2 metres of the ground) in the surrounding forest?	None within 10 metres - 30 metres	0	
	Scattered within 10 metres - 30 metres of buildings	5	
	Abundant within 10 metres - 30 metres of buildings	10	
YARD (10 metres - 30 metres) SCORE			

**SEPARATED**

Trees are widely spaced and crowns do not touch or overlap

**CONTINUOUS**

High stand density where trees are tightly spaced and crowns frequently touch or overlap

Home and Yard Hazard Score

SITE		TOTAL SCORE
Zone 1 / Home and Yard	Home	
	10 metres from the home	
Zone 2 / Yard	10 metres - 30 metres from the home	

HAZARD: Low: <21 Moderate: 21-29 High: 30-35 Extreme: >35

HOME CONSIDERATIONS

- Have you discussed wildfire damage and loss with your insurance provider?
- Is your roof in poor condition? A roof in poor condition will not provide protection from sparks and embers. Fire resistance deteriorates over time; check manufacturer guidelines to assess roof condition and potential fire resistance.
- Is your chimney clean? Does it have proper clearances, screens and spark arrestors?

YARD CONSIDERATIONS

- Is the area within 10 metres of buildings free of flammable trees, other vegetation and combustible materials?
- Are large capacity propane tanks within 10 metres of buildings? Are they clear of vegetation?
- Is fire suppression equipment readily available? Shovels, rakes, buckets and hoses should be easily accessible.
- Are burn barrels screened and at least 10 metres from combustible materials and buildings?
- Are overhead power lines clear of vegetation? Contact your service provider for assistance with removing trees in close proximity to utility lines.

Evacuation Tips

READY TO GO KIT

	2 litres of water for each person
	Non-refrigerated food and a manual can opener
	Plastic or paper plates, cups and utensils
	Flashlights and extra batteries
	Radio with batteries
	A change of clothes
	Emergency contact information and the number of someone to call who lives out of town
	Pet food and supplies for at least three days
	Small first aid kit
	Personal identification card
	Personal hygiene items, soap and hand sanitizer
	Store medicine you usually take near your ready-to-go kit
	Cash in small denominations

WHEN YOU LEAVE, REMEMBER TO

	Make sure you are safe before assisting others
	Listen to the radio or television for information from authorities
	Turn off your home water, electricity and gas
	Post easy to see signs for water and gas shut-offs
	Follow your family evacuation plan
	Bring your ready-to-go kit
	Close doors and windows

Family Evacuation Plan

Fill out this form and keep it near your home phone or someplace where everyone in your house can easily find it. Keep a copy in your emergency kit, and rehearse your evacuation plan at least once a year.

EMERGENCY: 911
REPORT A WILDFIRE: 310-FIRE

For up-to-date information on active wildfires, please download the Alberta Wildfire App (Apple/Android) on your smartphone or call **1-866-FYI-FIRE**.

For more information on how to prepare for a wildfire and other emergencies, go to: getprepared.gc.ca

OUR OUT-OF-TOWN EMERGENCY CONTACT IS:

Name	
Relationship	
Home Phone	
Cell Phone	
Address	
Email	

OUR EVACUATION ROUTES ARE (SKETCH ROUTES BELOW):

